



Golden Hills School Division

## Education Plan 2020-2021 – 2022-2023



## ***Dr. Elliott School***

### **Vision**

**To continue to be the exemplary model for community-based education in Canada.**

### **Mission**

**Committed to *Powerful Learning* in our community-based schools.**

### **Values**

**Engagement, collaboration, flexibility, positive, caring, relationships, citizenship**

Dr. Elliott School and Acme School along with the communities of Acme and Linden have operated as a Bi-Campus since 1979-80, 42 years of cooperation. Junior High students from both communities attend school at Dr. Elliott, high school students from both communities attend Acme School. Since 2011-12, Carbon School (K – 9) has joined the team, and we now operate as a Tri-Campus. High School students from all three communities attend Acme School.

Dr. Elliott School has a deeply rooted history of innovation and excellence, producing proud, engaged citizens. We believe that creative thinking, critical inquiry, collaborative group processes, and the ability to navigate dynamic work environments are the foundational skills of a prosperous marketplace.

Through strong community partnerships with local businesses and organizations, our students are engaged in authentic, real-world, meaningful experiences. Strong communities, such as ours, have healthy, reciprocal, collaborative partnerships which positively impact the success of our students.

## Goal 1: Every Student is Successful

### Combined May 2020 Accountability Pillar Overall Summary

Measure Category	Measure	Dr Elliott Community School			Alberta			Measure Evaluation		
		Current Result	Prev Year Result	Prev 3 Year Average	Current Result	Prev Year Result	Prev 3 Year Average	Achievement	Improvement	Overall
Safe and Caring Schools	Safe and Caring	95.0	100.0	96.3	89.4	89.0	89.2	Very High	Maintained	Excellent
Student Learning Opportunities	Program of Studies	54.7	65.2	67.9	82.4	82.2	82.0	Very Low	Maintained	Concern
	Education Quality	89.6	91.4	94.8	90.3	90.2	90.1	High	Maintained	Good
	Drop Out Rate	0.0	0.0	1.0	2.7	2.6	2.7	Very High	n/a	n/a
	High School Completion Rate (3 yr)	n/a	n/a	n/a	79.7	79.1	78.4	n/a	n/a	n/a
Student Learning Achievement (Grades K-9)	PAT: Acceptable	n/a	84.7	82.1	n/a	73.8	73.6	n/a	n/a	n/a
	PAT: Excellence	n/a	22.6	22.6	n/a	20.6	20.0	n/a	n/a	n/a
Student Learning Achievement (Grades 10-12)	Diploma: Acceptable	n/a	n/a	n/a	n/a	83.6	83.4	n/a	n/a	n/a
	Diploma: Excellence	n/a	n/a	n/a	n/a	24.0	23.5	n/a	n/a	n/a
	Diploma Exam Participation Rate (4+ Exams)	n/a	n/a	n/a	56.4	56.3	55.6	n/a	n/a	n/a
	Rutherford Scholarship Eligibility Rate	n/a	n/a	n/a	66.6	64.8	63.5	n/a	n/a	n/a
Preparation for Lifelong Learning, World of Work, Citizenship	Transition Rate (6 yr)	n/a	n/a	n/a	60.1	59.0	58.5	n/a	n/a	n/a
	Work Preparation	62.5	n/a	81.4	84.1	83.0	82.7	Very Low	Declined	Concern
	Citizenship	82.5	90.0	90.6	83.3	82.9	83.2	Very High	Maintained	Excellent
Parental Involvement	Parental Involvement	47.5	n/a	71.9	81.8	81.3	81.2	Very Low	Declined	Concern
Continuous Improvement	School Improvement	87.5	100.0	94.4	81.5	81.0	80.9	Very High	Maintained	Excellent

### Strategies:

1. Data analysis of PAT results as supported by GHSD Collaborative PD.
2. Continuing higher level thinking initiatives as supported by GHSD through instructional coaches, collaborative PD.
3. Continued emphasis on Literacy. Levelled Literacy Intervention to compliment Early Literacy Intervention program, and the Dr. Elliott Take 20 initiative to promote 20 minutes of reading at home each day.
4. GHSD Focus Groups for subject specific PD.
5. Robust CTF Program of Studies for Junior High Students: volunteerism, career exploration, entrepreneurial spirit, science and innovation, student leadership, health and wellness, home economics, shop
6. Successful extra-curricular sports program
7. Continue to enhance our learning spaces at Dr. Elliott School, specifically the "Rainforest Classroom" as a "makerspace".

## Goal 2: We have excellent teachers, school leaders, and school authority leaders

### Strategies:

#### 1. Community-Based Education Model

Our local area provides the perfect context to intentionally maximize learning for all. Because our location is both diverse and accessible, learning pathways can be uniquely tailored to meet the needs of individuals. While working alongside industry leaders and community partners on real-world challenges, students develop a deeper appreciation for the opportunities available locally.

Our students are lifelong learners and entrepreneurial thinkers. They are encouraged to actively seek out and embark on learning opportunities beyond the school day and outside of the school building. Through these partnerships, our students understand that innovation comes from a place of discomfort and inconvenience. Without a doubt students of Dr. Elliott School know that greatness takes hard work and commitment over time.

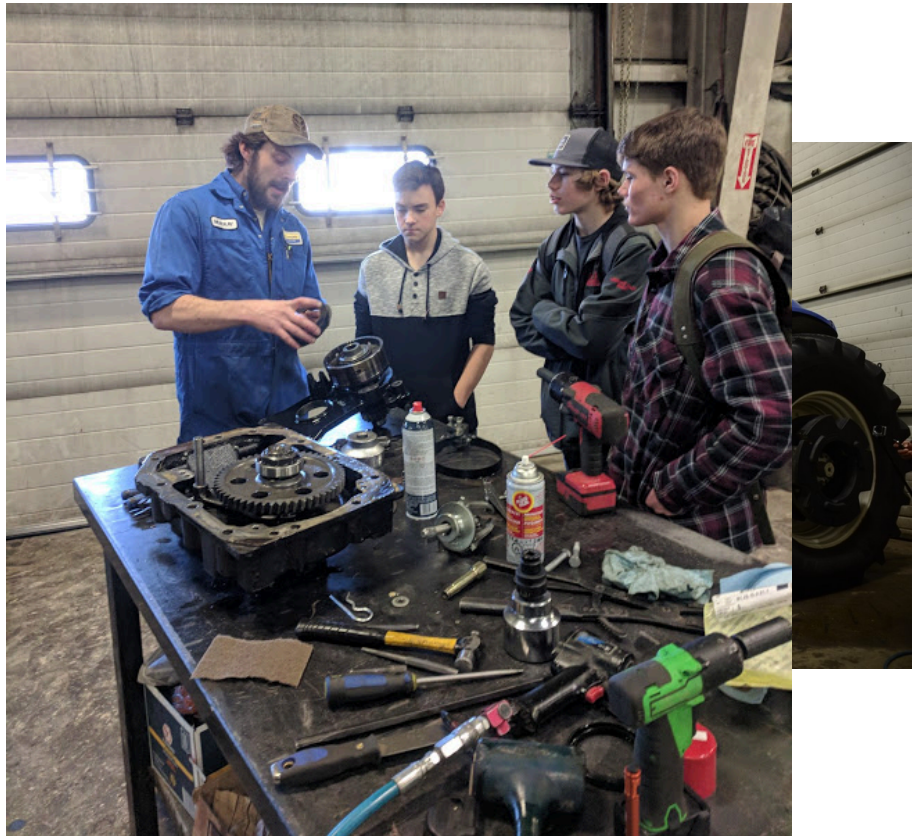
Introducing these challenges throughout K-12 schooling fosters the growth of value-added strategic solutions in all sectors of the economy. Our students play an integral role in designing homegrown solutions related to processing, producing and marketing goods and services internationally. As well, community-based training highlights educational and career pathways that will help to meet the growing need for a professional, highly trained, skilled labour force.



Introducing these challenges throughout K-12 schooling fosters the growth of value-added strategic solutions in all sectors of the economy. Our students play an integral role in designing homegrown solutions related to processing, producing and marketing goods and services internationally. As well, community-based training highlights educational and career pathways that will help to meet the growing need for a professional, highly trained, skilled labour force.

Our programming is:

- Fully integrated supporting current and developing technologies.
- Lively, spirited, robust; our programming accelerates entrepreneurial spirit through compelling experiences, networking opportunities, and access to relevant, state of the art resources that our students access through community partnerships.
- Flexible and easily reconfigured for evolving needs and interests.
- Accessible to our entire community in a way that honors a healthy community-based model of education by understanding that effective, partnerships are reciprocal, collaborative, and clearly articulated.
- Technologically rich, encouraging meaningful connections to local, provincial, national, and international community partners regardless of where they are located.
- Adaptive to changing times, needs, technologies, and lives.
- Promotes excellence through healthy competition through motivating, high performance academic, athletics, and career programming.
- Supports personal growth with access to a wide variety of resources and equipment for all ages, abilities, and interests.



- Promotes well-being by providing tools for individuals to explore their personal pathways to better align educational and career pathways for success beyond school.

### Goal 3: Our Education System is Well Managed

Budgeted Operating Expense 2020-2021			
			%
<b>Allocation</b> (includes prior year carry-over)		\$1,122,694.00	
<b>Staffing</b>	<b>Certificated</b> (Substitutes & Certificated Staffing)	\$1,008,500.00	90%
	<b>Non-Certificated</b> (Support & Other Staffing)	\$71,970.00	6%
<b>Supplies &amp; Services</b>		\$42,224.00	4%

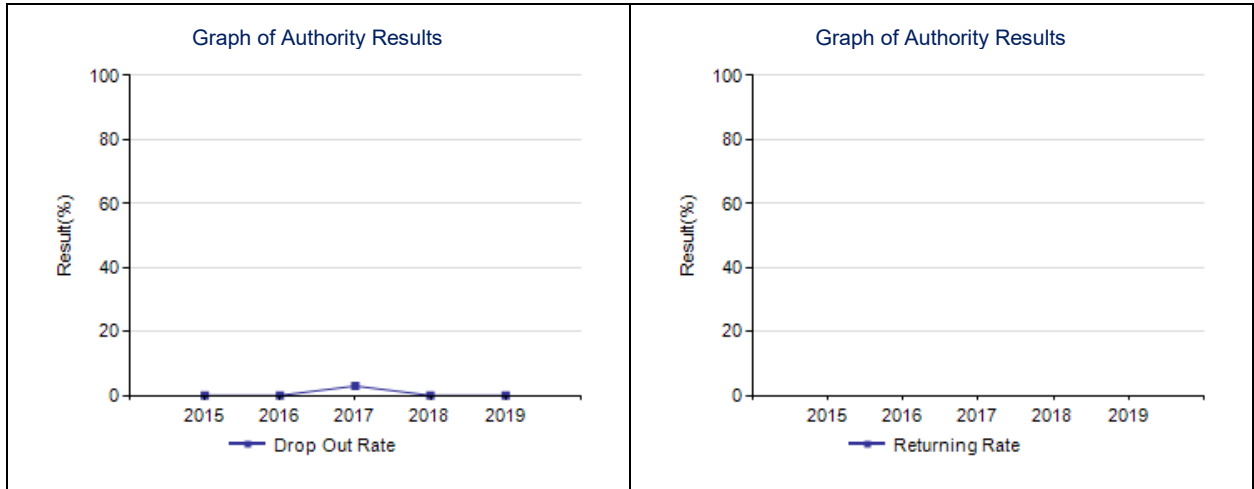
**APPENDIX – Measure Details (OPTIONAL)**

The following pages include tables and graphs that provide detailed data for the performance measures. Schools may include these under each measure/outcome to provide context and help in interpreting the results.

**Drop Out Rate – Measure Details**

Drop Out Rate - annual dropout rate of students aged 14 to 18

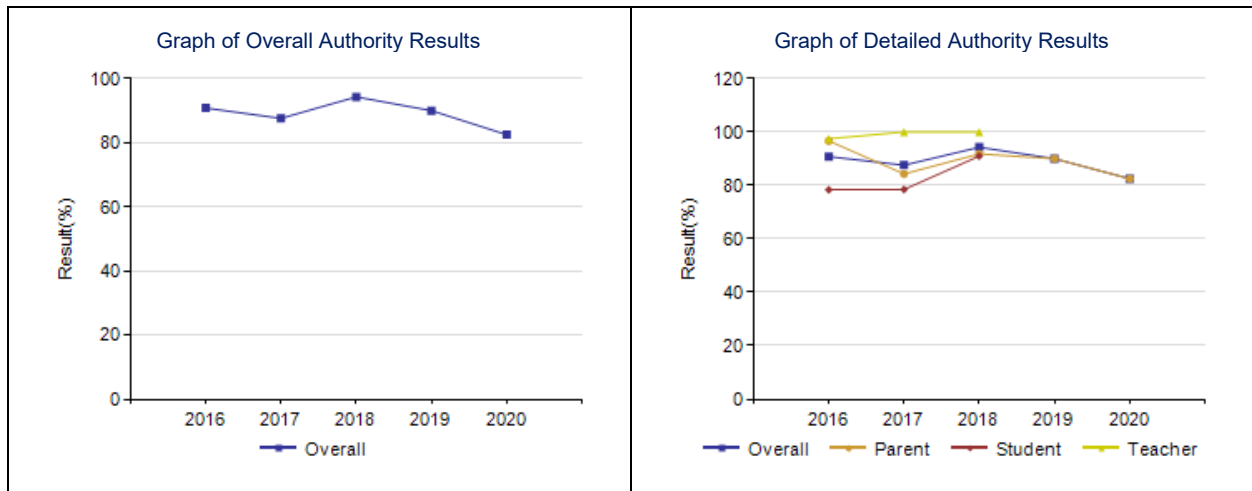
	School					Authority					Province				
	2015	2016	2017	2018	2019	2015	2016	2017	2018	2019	2015	2016	2017	2018	2019
Drop Out Rate	0.0	0.0	2.9	0.0	0.0	3.1	3.4	3.0	2.5	3.8	3.2	3.0	2.3	2.6	2.7
Returning Rate	n/a	n/a	n/a	*	n/a	10.1	10.1	23.6	18.6	15.1	18.2	18.9	19.9	22.7	18.2





**Citizenship – Measure Details**

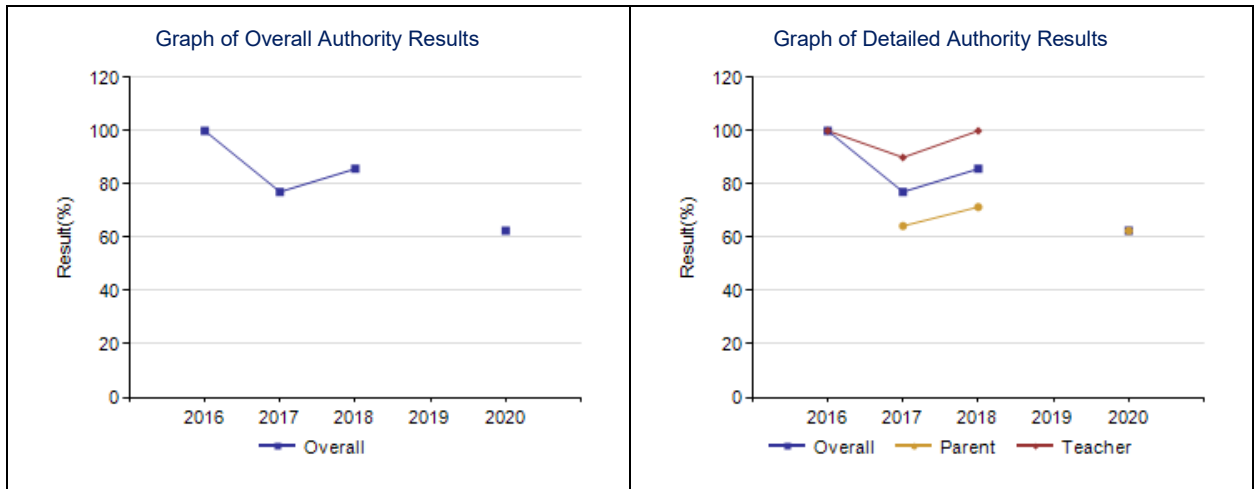
Percentage of teachers, parents and students who are satisfied that students model the characteristics of active citizenship.															
	School					Authority					Province				
	2016	2017	2018	2019	2020	2016	2017	2018	2019	2020	2016	2017	2018	2019	2020
Overall	90.8	87.6	94.3	90.0	82.5	84.0	86.0	85.6	84.8	83.3	83.9	83.7	83.0	82.9	83.3
Teacher	97.5	100.0	100.0	n/a	n/a	94.5	96.3	96.7	95.6	94.9	94.5	94.0	93.4	93.2	93.6
Parent	96.7	84.3	91.8	90.0	82.5	80.1	82.8	82.1	82.9	79.0	82.9	82.7	81.7	81.9	82.4
Student	78.4	78.5	91.0	n/a	n/a	77.4	78.9	77.9	75.9	76.1	74.5	74.4	73.9	73.5	73.8



**Work Preparation – Measure Details**

Percentage of teachers and parents who agree that students are taught attitudes and behaviours that will make them successful at work when they finish school.

	School					Authority					Province				
	2016	2017	2018	2019	2020	2016	2017	2018	2019	2020	2016	2017	2018	2019	2020
Overall	100.0	77.1	85.7	n/a	62.5	85.5	82.3	85.1	86.0	86.0	82.6	82.7	82.4	83.0	84.1
Teacher	100.0	90.0	100.0	n/a	n/a	94.4	92.2	94.0	95.7	99.3	90.5	90.4	90.3	90.8	92.2
Parent	*	64.3	71.4	*	62.5	76.6	72.5	76.3	76.4	72.6	74.8	75.1	74.6	75.2	76.0



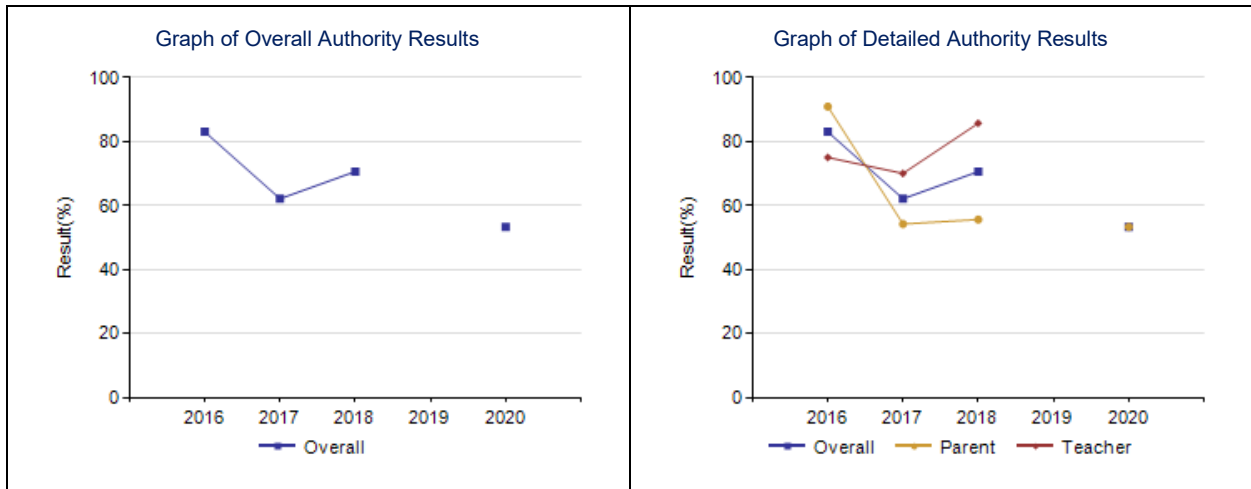
Notes:

1. Data values have been suppressed where the number of respondents/students is fewer than 6. Suppression is marked with an asterisk (\*).

**Lifelong Learning – Measure Details**

Percentage of teacher and parent satisfaction that students demonstrate the knowledge, skills and attitudes necessary for lifelong learning.

	School					Authority					Province				
	2016	2017	2018	2019	2020	2016	2017	2018	2019	2020	2016	2017	2018	2019	2020
Overall	83.0	62.1	70.6	n/a	53.3	74.6	75.1	73.6	74.2	74.0	70.7	71.0	70.9	71.4	72.6
Teacher	75.0	70.0	85.7	n/a	n/a	82.2	81.6	83.2	84.1	84.5	77.3	77.3	77.8	78.8	80.6
Parent	90.9	54.2	55.6	*	53.3	67.1	68.5	64.1	64.3	63.5	64.2	64.8	64.0	64.0	64.6



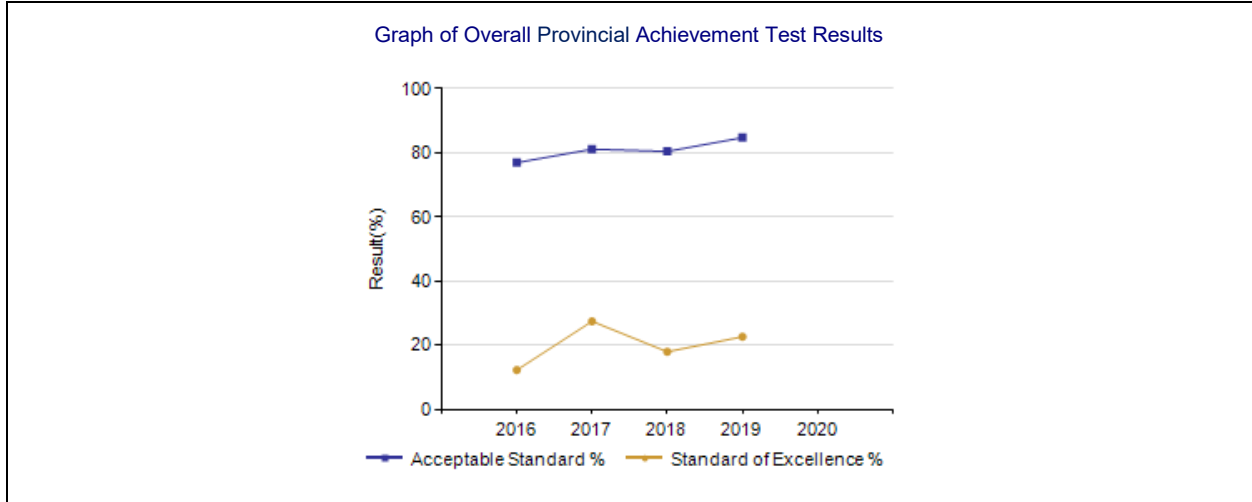
Notes:

1. Data values have been suppressed where the number of respondents/students is fewer than 6. Suppression is marked with an asterisk (\*).

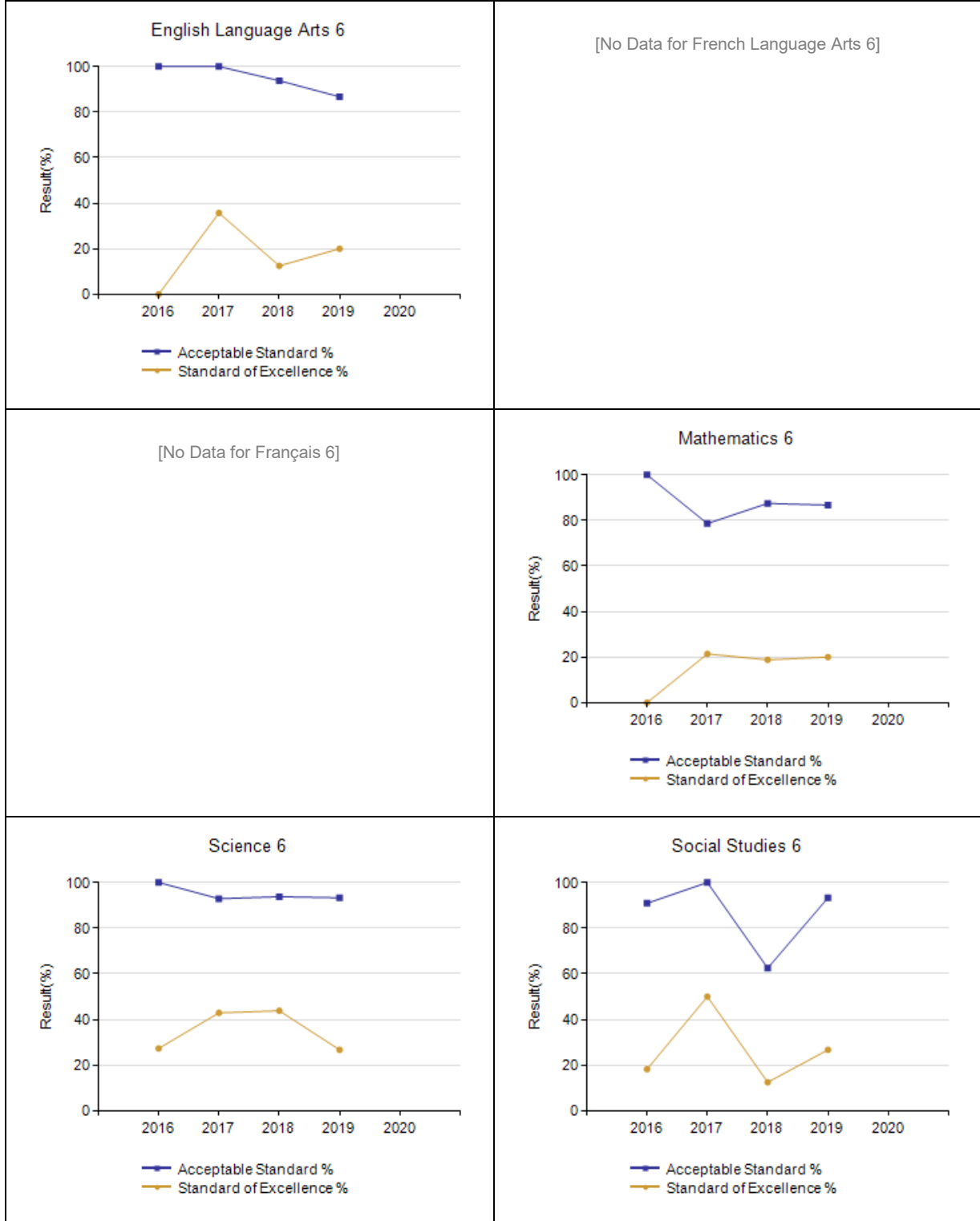
**Provincial Achievement Test Results – Measure Details**

PAT Course by Course Results by Number Enrolled.													
		Results (in percentages)										Target	
		2016		2017		2018		2019		2020		2020	
		A	E	A	E	A	E	A	E	A	E	A	E
English Language Arts 6	School	100.0	0.0	100.0	35.7	93.8	12.5	86.7	20.0	n/a	n/a		
	Authority	84.8	14.0	83.9	14.8	82.0	10.6	83.3	13.6	n/a	n/a		
	Province	82.9	20.4	82.5	18.9	83.5	17.9	83.2	17.8	n/a	n/a		
French Language Arts 6 année	School	n/a	n/a	n/a	n/a	n/a	n/a	n/a	n/a	n/a	n/a		
	Authority	n/a	n/a	n/a	n/a	n/a	n/a	n/a	n/a	n/a	n/a		
	Province	87.7	14.2	85.1	13.5	85.2	12.3	87.7	15.7	n/a	n/a		
Français 6 année	School	n/a	n/a	n/a	n/a	n/a	n/a	n/a	n/a	n/a	n/a		
	Authority	n/a	n/a	n/a	n/a	n/a	n/a	n/a	n/a	n/a	n/a		
	Province	91.4	17.2	92.1	21.6	93.3	23.1	90.3	24.6	n/a	n/a		
Mathematics 6	School	100.0	0.0	78.6	21.4	87.5	18.8	86.7	20.0	n/a	n/a		
	Authority	73.9	11.7	64.6	8.4	73.3	11.2	72.2	12.1	n/a	n/a		
	Province	72.2	14.0	69.4	12.6	72.9	14.0	72.5	15.0	n/a	n/a		
Science 6	School	100.0	27.3	92.9	42.9	93.8	43.8	93.3	26.7	n/a	n/a		
	Authority	76.6	22.6	77.6	24.6	76.2	21.8	77.8	27.0	n/a	n/a		
	Province	78.0	27.1	76.9	29.0	78.8	30.5	77.6	28.6	n/a	n/a		
Social Studies 6	School	90.9	18.2	100.0	50.0	62.5	12.5	93.3	26.7	n/a	n/a		
	Authority	70.6	15.0	67.4	17.9	68.1	13.4	70.4	16.3	n/a	n/a		
	Province	71.4	22.0	72.9	21.7	75.1	23.2	76.2	24.4	n/a	n/a		
English Language Arts 9	School	64.3	10.7	81.5	14.8	84.6	3.8	86.7	13.3	n/a	n/a		
	Authority	76.1	15.8	74.9	12.9	75.7	10.3	73.1	9.2	n/a	n/a		
	Province	77.0	15.2	76.8	14.9	76.1	14.7	75.1	14.7	n/a	n/a		
K&E English Language Arts 9	School	n/a	n/a	n/a	n/a	n/a	n/a	n/a	n/a	n/a	n/a		
	Authority	73.3	10.0	65.9	9.8	69.0	5.2	66.7	3.0	n/a	n/a		
	Province	59.8	6.2	58.8	5.9	55.7	5.9	57.4	5.4	n/a	n/a		
French Language Arts 9 année	School	n/a	n/a	n/a	n/a	n/a	n/a	n/a	n/a	n/a	n/a		
	Authority	n/a	n/a	n/a	n/a	n/a	n/a	n/a	n/a	n/a	n/a		
	Province	83.0	10.8	83.1	11.2	81.4	9.8	82.9	12.3	n/a	n/a		
Français 9 année	School	n/a	n/a	n/a	n/a	n/a	n/a	n/a	n/a	n/a	n/a		
	Authority	n/a	n/a	n/a	n/a	n/a	n/a	n/a	n/a	n/a	n/a		
	Province	86.4	26.8	88.9	26.1	82.7	22.3	88.6	26.0	n/a	n/a		
Mathematics 9	School	57.1	10.7	63.0	22.2	61.5	3.8	58.6	10.3	n/a	n/a		
	Authority	65.1	12.6	65.8	16.1	56.7	10.9	54.0	13.4	n/a	n/a		
	Province	67.8	17.5	67.2	19.0	59.2	15.0	60.0	19.0	n/a	n/a		
K&E Mathematics 9	School	n/a	n/a	n/a	n/a	n/a	n/a	n/a	n/a	n/a	n/a		
	Authority	60.3	25.9	71.4	38.1	70.2	29.8	68.4	34.2	n/a	n/a		
	Province	61.2	13.0	57.5	13.3	57.4	13.6	59.6	13.2	n/a	n/a		
Science 9	School	78.6	10.7	77.8	18.5	92.3	30.8	89.7	31.0	n/a	n/a		
	Authority	73.9	15.4	68.5	16.0	73.3	20.7	69.5	20.0	n/a	n/a		
	Province	74.2	22.4	74.0	21.4	75.7	24.4	75.2	26.4	n/a	n/a		
K&E Science 9	School	n/a	n/a	n/a	n/a	n/a	n/a	n/a	n/a	n/a	n/a		
	Authority	70.7	10.3	74.4	20.5	82.8	8.6	75.9	6.9	n/a	n/a		
	Province	63.8	14.3	63.9	13.3	64.6	12.3	61.7	10.7	n/a	n/a		
Social Studies 9	School	75.0	17.9	77.8	33.3	73.1	23.1	93.1	34.5	n/a	n/a		
	Authority	62.6	13.8	66.4	18.2	64.8	15.9	61.0	14.2	n/a	n/a		
	Province	64.7	18.0	67.0	20.2	66.7	21.5	68.7	20.6	n/a	n/a		

K&E Social Studies 9	School	n/a	n/a	n/a	n/a	n/a	n/a	n/a	n/a	n/a	n/a		
	Authority	58.6	8.6	58.5	12.2	70.9	12.7	62.1	13.8	n/a	n/a		
	Province	58.0	11.6	56.3	12.7	55.2	14.2	55.9	15.0	n/a	n/a		



Graph of Provincial Achievement Test Results by Course



Graph of Provincial Achievement Test Results by Course

<p style="text-align: center;"><b>English Language Arts 9</b></p> <table border="1"> <thead> <tr> <th>Year</th> <th>Acceptable Standard %</th> <th>Standard of Excellence %</th> </tr> </thead> <tbody> <tr> <td>2016</td> <td>65</td> <td>10</td> </tr> <tr> <td>2017</td> <td>82</td> <td>15</td> </tr> <tr> <td>2018</td> <td>85</td> <td>5</td> </tr> <tr> <td>2019</td> <td>88</td> <td>12</td> </tr> </tbody> </table>	Year	Acceptable Standard %	Standard of Excellence %	2016	65	10	2017	82	15	2018	85	5	2019	88	12	<p>[No Data for English Lang Arts 9 KAE]</p>
Year	Acceptable Standard %	Standard of Excellence %														
2016	65	10														
2017	82	15														
2018	85	5														
2019	88	12														
<p>[No Data for French Language Arts 9]</p>	<p>[No Data for Français 9]</p>															
<p style="text-align: center;"><b>Mathematics 9</b></p> <table border="1"> <thead> <tr> <th>Year</th> <th>Acceptable Standard %</th> <th>Standard of Excellence %</th> </tr> </thead> <tbody> <tr> <td>2016</td> <td>58</td> <td>10</td> </tr> <tr> <td>2017</td> <td>65</td> <td>22</td> </tr> <tr> <td>2018</td> <td>62</td> <td>5</td> </tr> <tr> <td>2019</td> <td>58</td> <td>10</td> </tr> </tbody> </table>	Year	Acceptable Standard %	Standard of Excellence %	2016	58	10	2017	65	22	2018	62	5	2019	58	10	<p>[No Data for Mathematics 9 KAE]</p>
Year	Acceptable Standard %	Standard of Excellence %														
2016	58	10														
2017	65	22														
2018	62	5														
2019	58	10														

Graph of Provincial Achievement Test Results by Course

<p style="text-align: center;"><b>Science 9</b></p> <table border="1"> <thead> <tr> <th>Year</th> <th>Acceptable Standard %</th> <th>Standard of Excellence %</th> </tr> </thead> <tbody> <tr> <td>2016</td> <td>78</td> <td>10</td> </tr> <tr> <td>2017</td> <td>77</td> <td>18</td> </tr> <tr> <td>2018</td> <td>92</td> <td>30</td> </tr> <tr> <td>2019</td> <td>90</td> <td>30</td> </tr> </tbody> </table>	Year	Acceptable Standard %	Standard of Excellence %	2016	78	10	2017	77	18	2018	92	30	2019	90	30	<p>[No Data for Science 9 KAE]</p>
Year	Acceptable Standard %	Standard of Excellence %														
2016	78	10														
2017	77	18														
2018	92	30														
2019	90	30														
<p style="text-align: center;"><b>Social Studies 9</b></p> <table border="1"> <thead> <tr> <th>Year</th> <th>Acceptable Standard %</th> <th>Standard of Excellence %</th> </tr> </thead> <tbody> <tr> <td>2016</td> <td>75</td> <td>18</td> </tr> <tr> <td>2017</td> <td>78</td> <td>32</td> </tr> <tr> <td>2018</td> <td>73</td> <td>22</td> </tr> <tr> <td>2019</td> <td>93</td> <td>35</td> </tr> </tbody> </table>	Year	Acceptable Standard %	Standard of Excellence %	2016	75	18	2017	78	32	2018	73	22	2019	93	35	<p>[No Data for Social Studies 9 KAE]</p>
Year	Acceptable Standard %	Standard of Excellence %														
2016	75	18														
2017	78	32														
2018	73	22														
2019	93	35														



PAT Results Course By Course Summary By Enrolled With Measure Evaluation

Course	Measure	Dr Elliott Community School							Alberta			
		Achievement	Improvement	Overall	2020		Prev 3 Year Average		2020		Prev 3 Year Average	
					N	%	N	%	N	%	N	%
English Language Arts 6	Acceptable Standard	n/a	n/a	n/a	n/a	n/a	15	93.5	n/a	n/a	51,977	83.1
	Standard of Excellence	n/a	n/a	n/a	n/a	n/a	15	22.7	n/a	n/a	51,977	18.2
French Language Arts 6 année	Acceptable Standard	n/a	n/a	n/a	n/a	n/a	n/a	n/a	n/a	n/a	3,357	86.0
	Standard of Excellence	n/a	n/a	n/a	n/a	n/a	n/a	n/a	n/a	n/a	3,357	13.8
Français 6 année	Acceptable Standard	n/a	n/a	n/a	n/a	n/a	n/a	n/a	n/a	n/a	605	91.9
	Standard of Excellence	n/a	n/a	n/a	n/a	n/a	n/a	n/a	n/a	n/a	605	23.1
Mathematics 6	Acceptable Standard	n/a	n/a	n/a	n/a	n/a	15	84.2	n/a	n/a	51,924	71.6
	Standard of Excellence	n/a	n/a	n/a	n/a	n/a	15	20.1	n/a	n/a	51,924	13.9
Science 6	Acceptable Standard	n/a	n/a	n/a	n/a	n/a	15	93.3	n/a	n/a	51,966	77.8
	Standard of Excellence	n/a	n/a	n/a	n/a	n/a	15	37.8	n/a	n/a	51,966	29.4
Social Studies 6	Acceptable Standard	n/a	n/a	n/a	n/a	n/a	15	85.3	n/a	n/a	51,937	74.7
	Standard of Excellence	n/a	n/a	n/a	n/a	n/a	15	29.7	n/a	n/a	51,937	23.1
English Language Arts 9	Acceptable Standard	n/a	n/a	n/a	n/a	n/a	28	84.3	n/a	n/a	46,591	76.0
	Standard of Excellence	n/a	n/a	n/a	n/a	n/a	28	10.7	n/a	n/a	46,591	14.8
K&E English Language Arts 9	Acceptable Standard	n/a	n/a	n/a	n/a	n/a	n/a	n/a	n/a	n/a	1,528	57.3
	Standard of Excellence	n/a	n/a	n/a	n/a	n/a	n/a	n/a	n/a	n/a	1,528	5.7
French Language Arts 9 année	Acceptable Standard	n/a	n/a	n/a	n/a	n/a	n/a	n/a	n/a	n/a	2,824	82.4
	Standard of Excellence	n/a	n/a	n/a	n/a	n/a	n/a	n/a	n/a	n/a	2,824	11.1
Français 9 année	Acceptable Standard	n/a	n/a	n/a	n/a	n/a	n/a	n/a	n/a	n/a	378	86.7
	Standard of Excellence	n/a	n/a	n/a	n/a	n/a	n/a	n/a	n/a	n/a	378	24.8
Mathematics 9	Acceptable Standard	n/a	n/a	n/a	n/a	n/a	27	61.0	n/a	n/a	46,129	62.1
	Standard of Excellence	n/a	n/a	n/a	n/a	n/a	27	12.1	n/a	n/a	46,129	17.6
K&E Mathematics 9	Acceptable Standard	n/a	n/a	n/a	n/a	n/a	n/a	n/a	n/a	n/a	2,029	58.2
	Standard of Excellence	n/a	n/a	n/a	n/a	n/a	n/a	n/a	n/a	n/a	2,029	13.4
Science 9	Acceptable Standard	n/a	n/a	n/a	n/a	n/a	27	86.6	n/a	n/a	46,581	75.0
	Standard of Excellence	n/a	n/a	n/a	n/a	n/a	27	26.8	n/a	n/a	46,581	24.1
K&E Science 9	Acceptable Standard	n/a	n/a	n/a	n/a	n/a	n/a	n/a	n/a	n/a	1,501	63.4
	Standard of Excellence	n/a	n/a	n/a	n/a	n/a	n/a	n/a	n/a	n/a	1,501	12.1
Social Studies 9	Acceptable Standard	n/a	n/a	n/a	n/a	n/a	27	81.3	n/a	n/a	46,607	67.5
	Standard of Excellence	n/a	n/a	n/a	n/a	n/a	27	30.3	n/a	n/a	46,607	20.8
K&E Social Studies 9	Acceptable Standard	n/a	n/a	n/a	n/a	n/a	n/a	n/a	n/a	n/a	1,453	55.8
	Standard of Excellence	n/a	n/a	n/a	n/a	n/a	n/a	n/a	n/a	n/a	1,453	14.0

Program of Studies – Measure Details

Percentage of teachers, parents and students satisfied with the opportunity for students to receive a broad program of studies including fine arts, career, technology, and health and physical education.

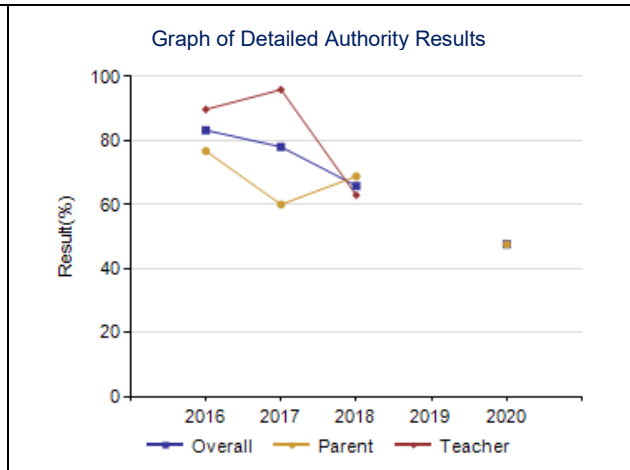
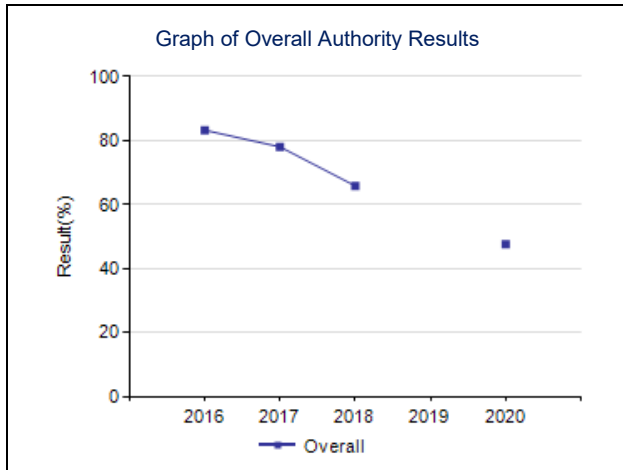
	School					Authority					Province				
	2016	2017	2018	2019	2020	2016	2017	2018	2019	2020	2016	2017	2018	2019	2020
Overall	73.6	66.2	72.1	65.2	54.7	79.6	81.1	79.0	81.0	81.2	81.9	81.9	81.8	82.2	82.4
Teacher	70.3	70.0	73.2	n/a	n/a	84.5	87.8	88.0	85.7	89.7	88.1	88.0	88.4	89.1	89.3
Parent	83.0	62.9	72.2	65.2	54.7	77.3	77.7	76.0	79.2	75.4	80.1	80.1	79.9	80.1	80.1
Student	67.6	65.8	70.9	n/a	n/a	77.1	77.7	73.1	78.2	78.4	77.5	77.7	77.2	77.4	77.8

--	--

**Parental Involvement – Measure Details**

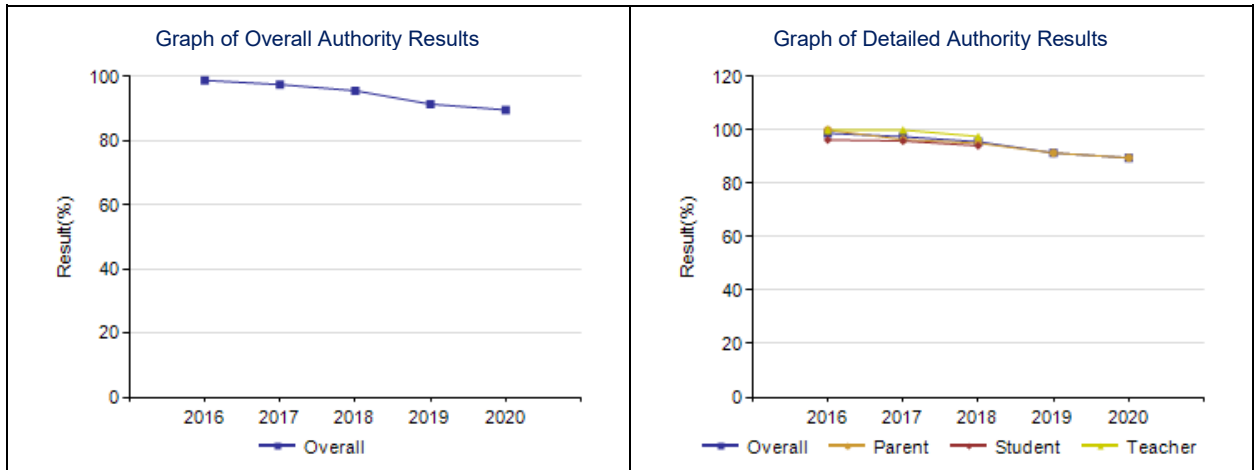
Percentage of teachers and parents satisfied with parental involvement in decisions about their child's education.

	School					Authority					Province				
	2016	2017	2018	2019	2020	2016	2017	2018	2019	2020	2016	2017	2018	2019	2020
Overall	83.2	78.0	65.8	n/a	47.5	80.3	84.4	81.6	82.5	80.5	80.9	81.2	81.2	81.3	81.8
Teacher	89.7	95.9	62.9	n/a	n/a	87.8	91.5	90.0	92.1	90.2	88.4	88.5	88.9	89.0	89.6
Parent	76.7	60.0	68.8	*	47.5	72.8	77.3	73.1	72.8	70.7	73.5	73.9	73.4	73.6	73.9



**Education Quality – Measure Details**

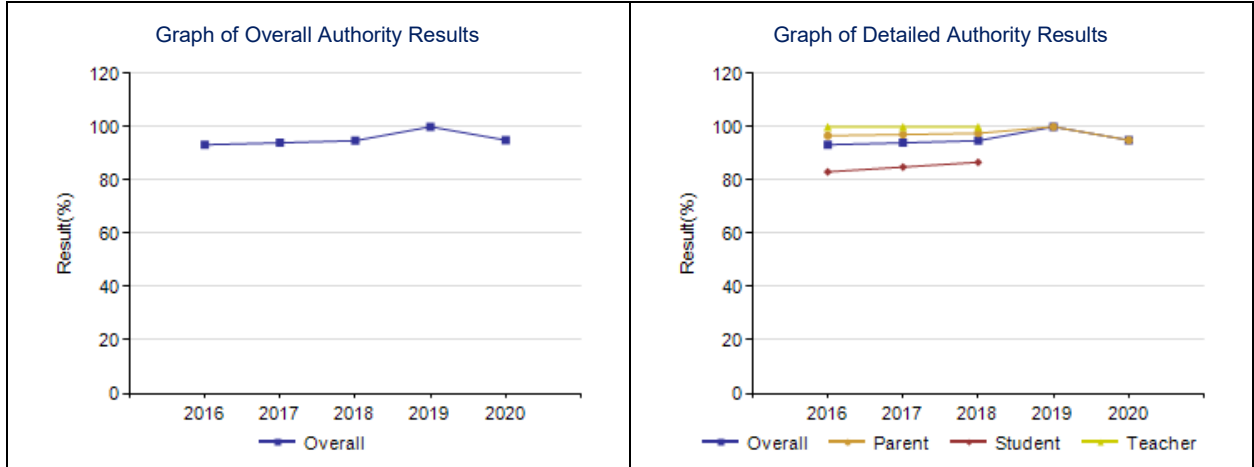
Percentage of teachers, parents and students satisfied with the overall quality of basic education.															
	School					Authority					Province				
	2016	2017	2018	2019	2020	2016	2017	2018	2019	2020	2016	2017	2018	2019	2020
Overall	98.8	97.5	95.6	91.4	89.6	92.1	92.4	92.0	92.1	91.4	90.1	90.1	90.0	90.2	90.3
Teacher	100.0	100.0	97.6	n/a	n/a	98.0	98.3	97.8	98.1	97.8	96.0	95.9	95.8	96.1	96.4
Parent	100.0	96.4	95.1	91.4	89.6	87.9	88.4	87.8	88.7	86.6	86.1	86.4	86.0	86.4	86.7
Student	96.3	95.9	94.1	n/a	n/a	90.5	90.5	90.3	89.6	89.8	88.0	88.1	88.2	88.1	87.8



**Safe and Caring – Measure Details**

Percentage of teacher, parent and student agreement that: students are safe at school, are learning the importance of caring for others, are learning respect for others and are treated fairly in school.

	School					Authority					Province				
	2016	2017	2018	2019	2020	2016	2017	2018	2019	2020	2016	2017	2018	2019	2020
Overall	93.3	94.0	94.8	100.0	95.0	90.9	91.2	90.6	90.6	90.0	89.5	89.5	89.0	89.0	89.4
Teacher	100.0	100.0	100.0	n/a	n/a	96.7	96.9	97.5	96.8	96.9	95.4	95.3	95.0	95.1	95.3
Parent	96.7	97.1	97.6	100.0	95.0	89.2	90.3	89.8	91.5	87.7	89.8	89.9	89.4	89.7	90.2
Student	83.1	84.9	86.7	n/a	n/a	86.8	86.5	84.6	83.6	85.5	83.4	83.3	82.5	82.3	82.6



**School Improvement – Measure Details**

Percentage of teachers, parents and students indicating that their school and schools in their jurisdiction have improved or stayed the same the last three years.

	School					Authority					Province				
	2016	2017	2018	2019	2020	2016	2017	2018	2019	2020	2016	2017	2018	2019	2020
Overall	92.7	91.2	91.9	100.0	87.5	86.3	88.0	83.0	84.7	84.3	81.2	81.4	80.3	81.0	81.5
Teacher	87.5	100.0	100.0	n/a	n/a	90.3	88.5	86.2	85.5	90.1	82.3	82.2	81.5	83.4	85.0
Parent	100.0	85.7	80.0	100.0	87.5	81.7	88.5	79.3	84.0	77.5	79.7	80.8	79.3	80.3	80.0
Student	90.7	88.0	95.8	n/a	n/a	86.8	86.9	83.4	84.4	85.4	81.5	81.1	80.2	79.4	79.6

